



26 Otter Street
Kettering, NN14 6FX



Simpson Ellson

Sold before marketing – register your details today to gain exclusive early access to upcoming properties before they appear on Rightmove.

This beautifully presented three-bedroom end-terrace home is ideal for families or those looking to downsize without compromising on space or comfort.

The property benefits from off-road parking for two vehicles and boasts a spacious kitchen-dining area, perfect for entertaining family and friends. Patio doors open out onto a generous rear garden, creating a seamless indoor-outdoor living experience.

A separate lounge provides a cosy retreat for relaxing after a long day, while a convenient downstairs WC adds practicality.

Upstairs, you'll find three well-proportioned bedrooms, including a master bedroom with en-suite, along with a modern family bathroom.

£240,000



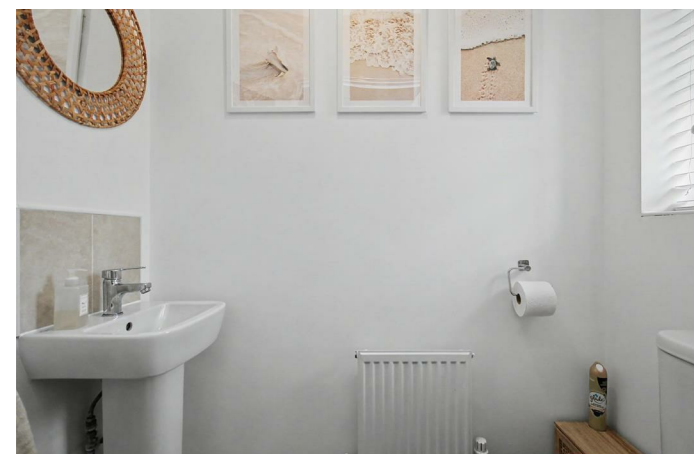
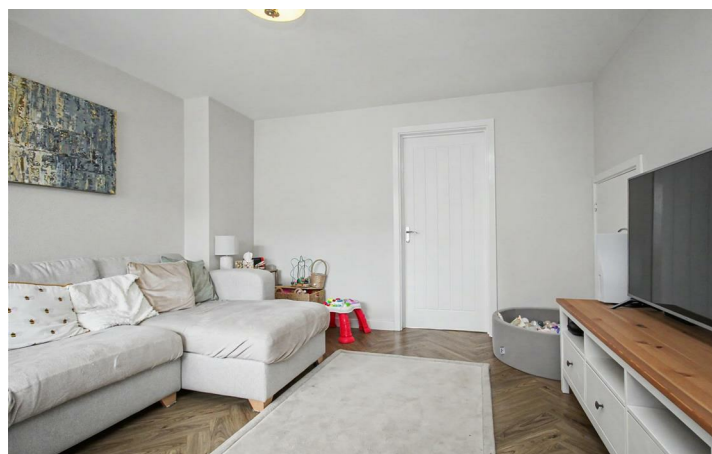
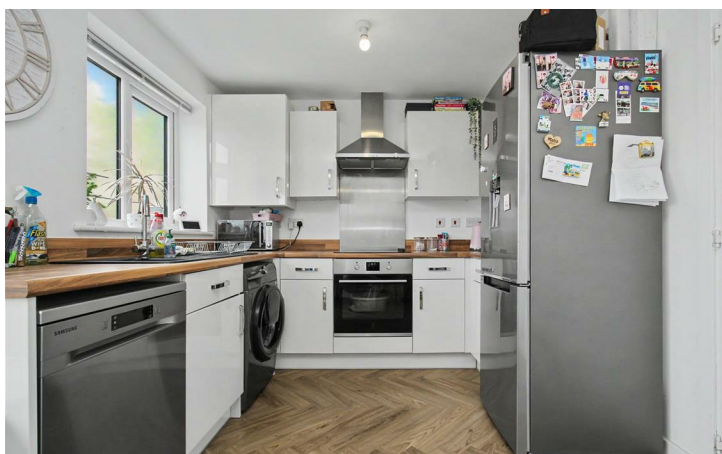
3

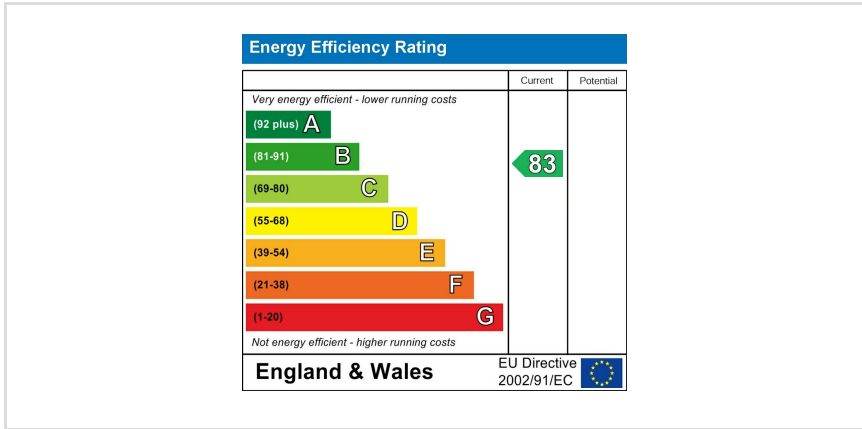


2



1







**Simpson
Ellson**

T: 01536 645960

E: rothwell@simpsonellson.co.uk



01536 645960

rothwell@simpsonellson.co.uk

<https://www.simpsonellson.co.uk>

32 High Street, Rothwell, Northants, NN14 6BQ